



Report on Students Satisfaction Survey on Institutional Quality Assurance – 2017-18

Random Survey conducted among all batches of students regarding the Institutional Quality Assurance. The survey examines different aspects of curriculum, teaching learning, infrastructure & student support facility of the institution aiming quality assurance. Total ten questions were to be analyzed by the students and their suggestions were also appreciated for overall improvement.

The students positively participated in the survey. The 99% of students highly appreciated the appropriate timely coverage of curricula and syllabi.

Teaching process is completely ICT enabled and more than three quarter of the teaching faculty adopts modern teaching methodologies and ICT enabled tools which are appreciated by the students.

Vast majority of the students (approximately 95%) are satisfied with the clinical and practical facilities for academic development for the students.

The mentoring process initiated for academic, social and personality growth is being appreciated by more than 85% of the students.

Community outreach programs are mainly given for clinical students and more than half (58%) of the students are satisfied with the outdoor learning process.

Majority of the students (81%) are satisfied with the value added courses and training given in the area of professional ethics, personality development, community services, preventive health care and rural health care.

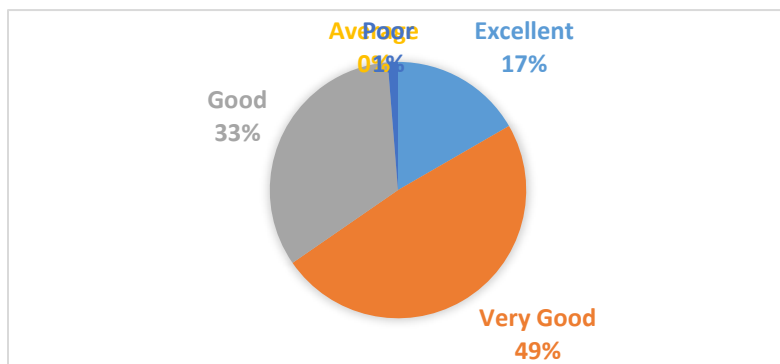
80% of the student community agrees to the fair and transparent assessment and evaluation process and the policies of the institution.

An overwhelming percentage of students (90%) rate the procedures adopted and practiced in examination and evaluation policies as adequate.

More than 70% of the students agree for an award rate above 4 stars level, which indicates the high level student satisfaction in the campus.

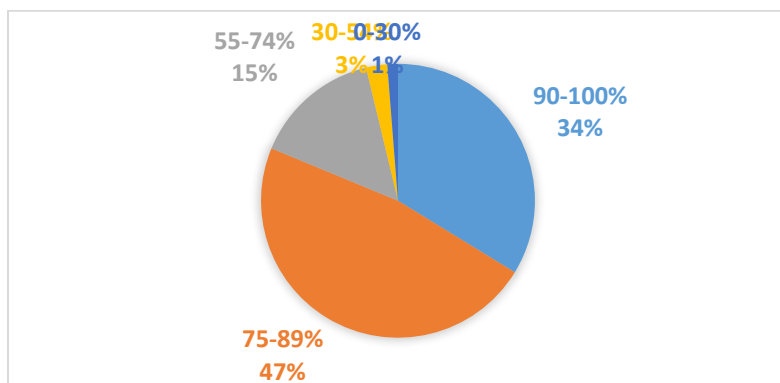
1. Coverage of curricula and syllabi in the discipline

(a) Excellent (b) Very good (c) Good (d) Average (e) Poor



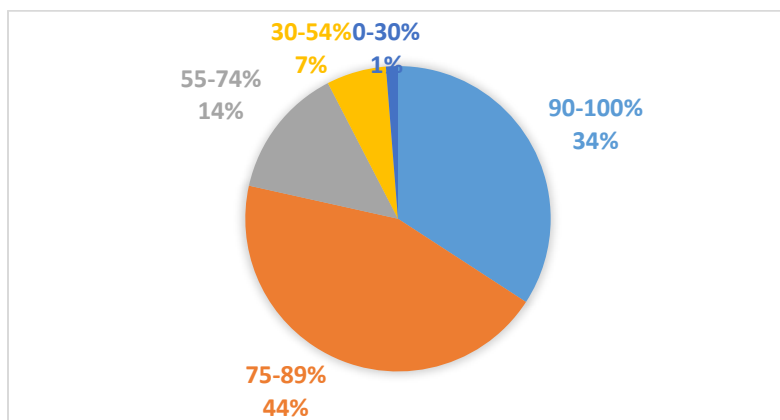
2. Percentage of teachers effectively communicating the topic using teaching aids (Black Board, video presentation, Power point presentation and other internet sources) while teaching.

(a) 90 to 100% (b) 75 to 89% (c) 55 to 74% (d) 30 to 54% (e) below 30%

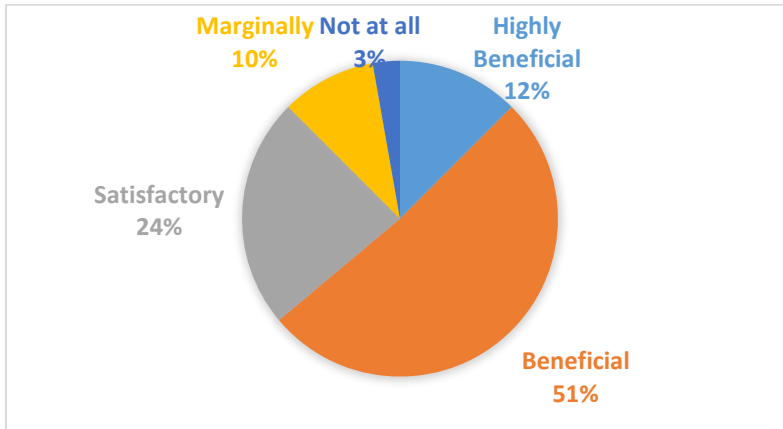


3. Extend of clinical & practical facilities made available

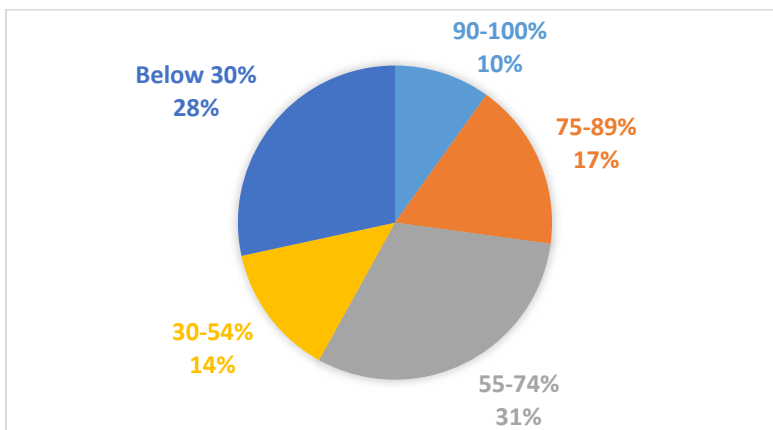
(a) 90 to 100% (b) 75 to 89% (c) 55 to 74% (d) 30 to 54% (e) 0 - below 30%



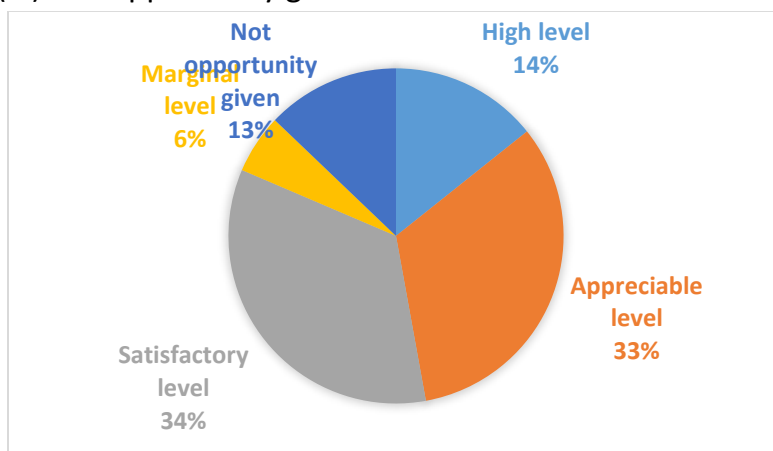
4. Extent of mentoring process beneficial for academic, social and personality growth.
 (a) Highly beneficial (b) Beneficial (c) Satisfactory (d) Marginally (e) Not at all



5. Extend of opportunities given for outdoor learning like community outreach programs, study tours, attending conferences etc.
 (a) 90 to 100% (b) 75 to 89% (c) 55 to 74% (d) 30 to 54% (e) below 30%

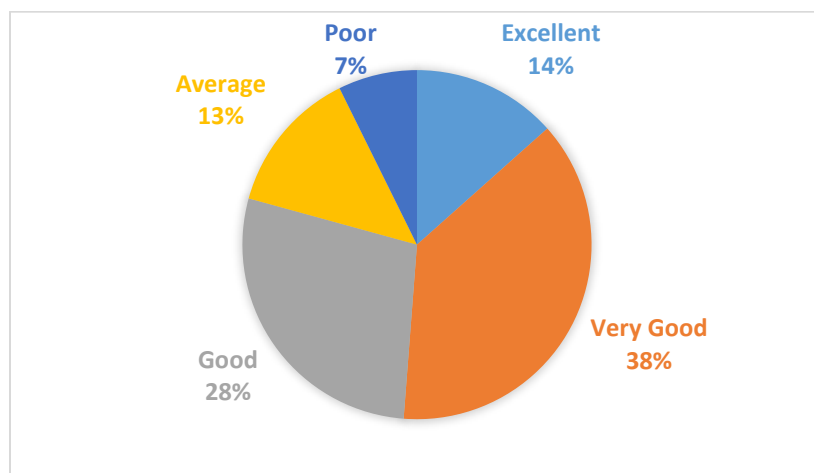


6. Level of value added courses / training given in the area of professional ethics, personality development, community services, preventive health care and rural health care.
 (a) High level (b) Appreciable level (c) Satisfactory level (d) Marginal level
 (e) Not opportunity given



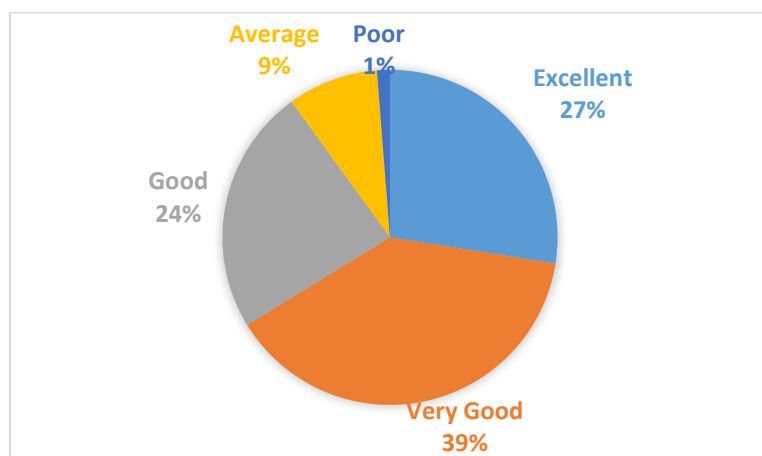
7. Assessment about the fairness of the internal evaluation process adopted by the teachers.

- (a) Excellent (b) Very good (c) Good (d) Average (e) Poor



8. Rate the procedures involved in preparation of the examination hall, invigilation, evaluation of answer papers and arrangements for addressing examination related grievances.

- (a) Excellent (b) Very good (c) Good (d) Average (e) Poor



9. If you were to award rating in terms of stars in relation to quality of teaching learning and evaluation, what would be your rating?

- (a) 5 stars (b) 4 stars (c) 3 stars (d) 2 stars (e) 1 star

